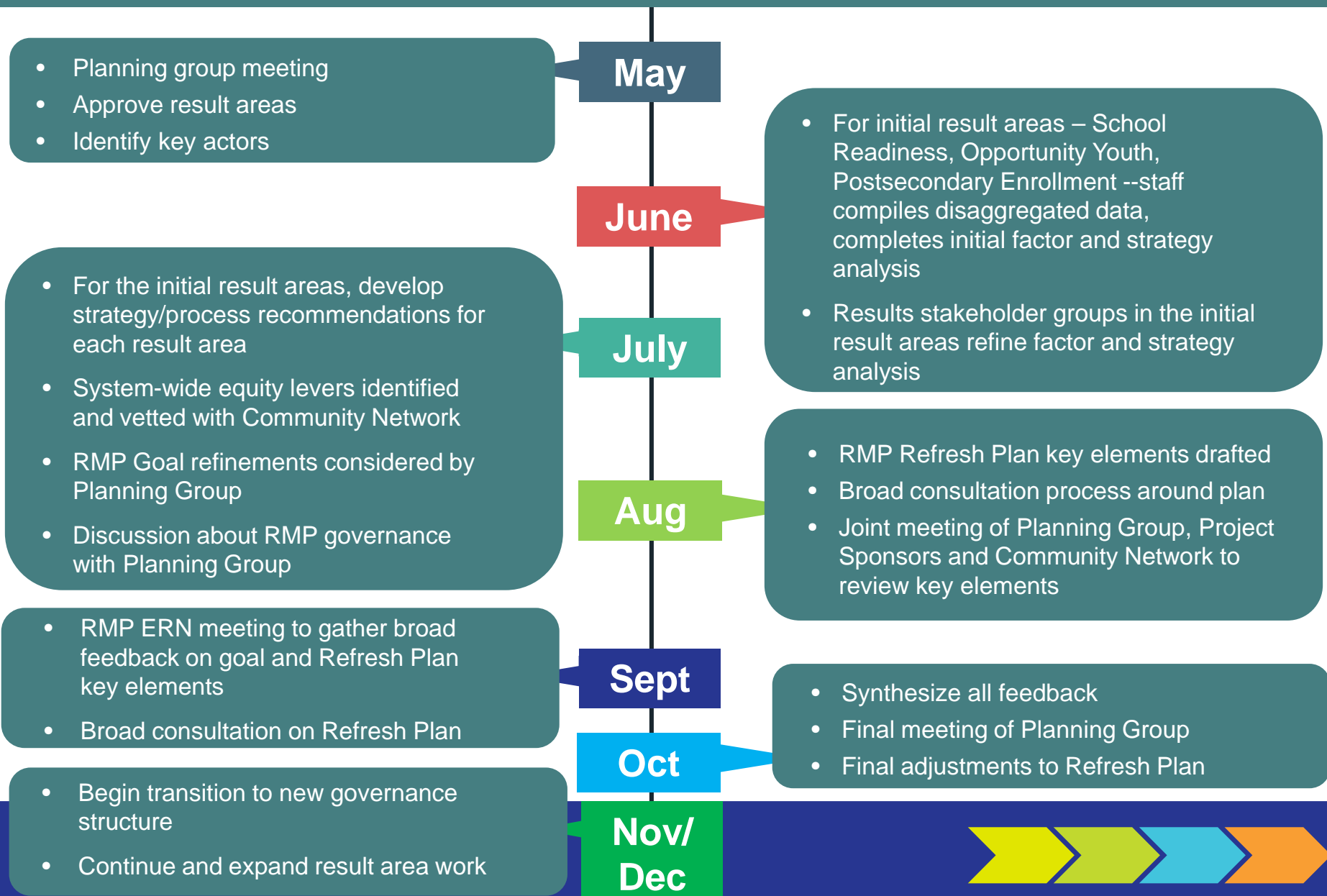


# Road Map Project Strategic Refresh Process Timeline

## DRAFT



# ADDRESSING DISPARITIES AND ADVANCING DEEP CHANGE ACROSS TIME SCALES (V4)

## Right Now

Highly targeted, execution focused efforts result in children, youth and families better off now

## One Year

Catalytic programs and practices are being implemented at increasing scale; shifting funding formulas, system levers identified, early tests of change underway. Population-level results shifting

## Two to Three Years

Widespread program and practice transformation; evidence of early system change and cross-system alignment. Population level results shifted significantly

## Three to Ten Years

System transformation to produce equitable results for all children. Priorities, definitions and standards of success, accountability transformed

## Five to Twenty Years

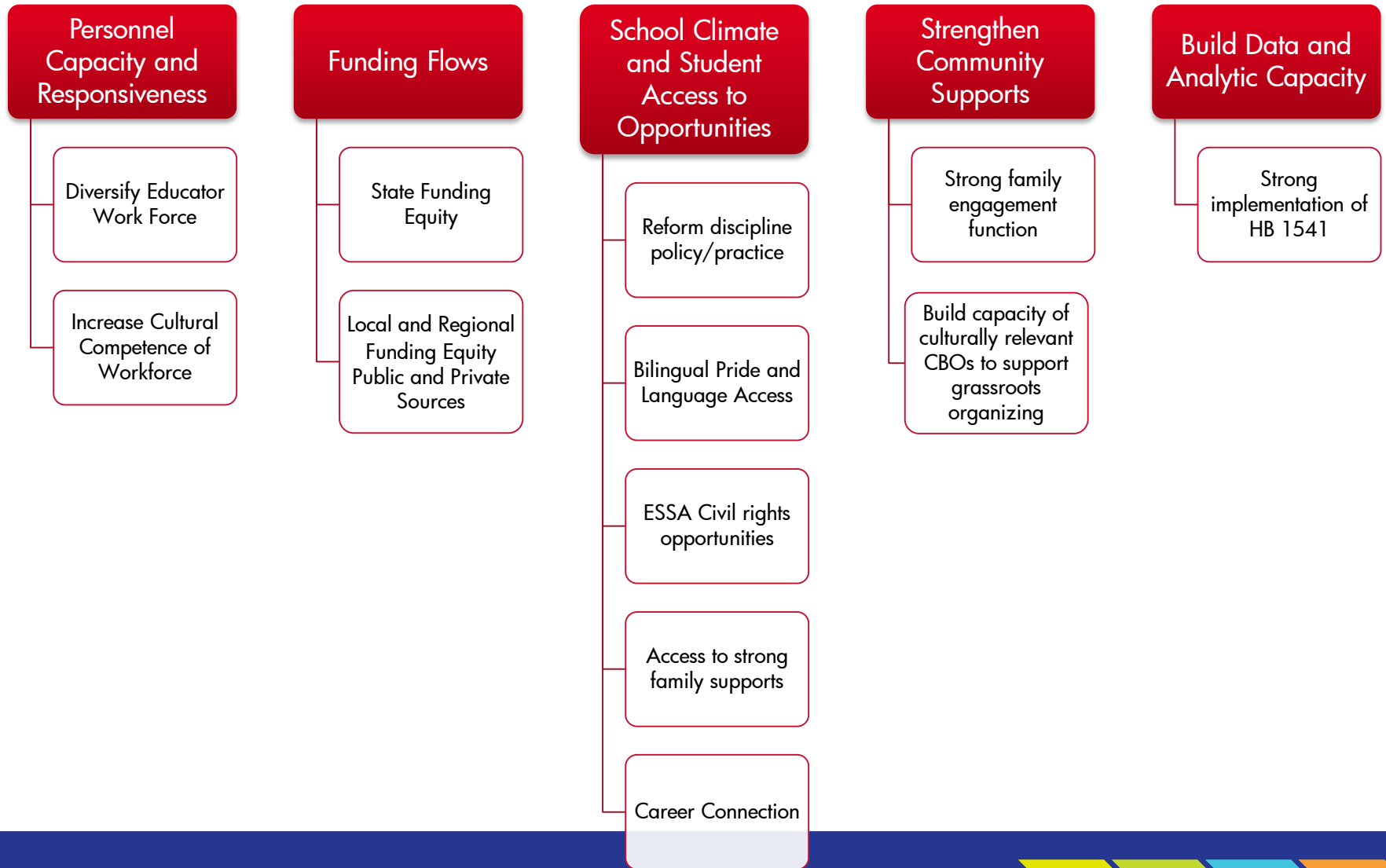
Culture change: beliefs and behaviors shift broadly sustaining equitable results sustained for all children as political and environmental conditions change.

Strategies across multiple time scales worked concurrently

ALIGNED LEADERS NAVIGATE POLITICAL & ENVIRONMENTAL SHIFTS TO DRIVE EQUITABLE RESULTS TO SUSTAINABLE SCALE

# DRAFT Road Map Project System-Wide Equity Levers

The equity levers identified in this chart are system changes that, if advanced, will have a significant impact on student opportunities across multiple indicator areas/age groups.



# Result Area Activities

- Six meetings (two per area) across three Result Areas in June/July
  - School Readiness
  - Opportunity Youth
  - Postsecondary Enrollment
- Work sessions focused on:
  - Defining whole populations and program populations
  - Defining/clarifying roles amongst partners
  - Identifying additional stakeholders
  - Developing initial Universal/Targeted Factor Analyses
  - Assessing current strategies
  - Developing Performance Measures



# Insights about Result Area Work

Results Accountability work has highlighted the need for shifts in...

- Role Clarity: To ensure aligned partner contributions
- Targeted Strategies: To support specific student populations
- Shared Accountability: To develop shared Performance Measures to monitor progress on strategy work to support better, more equitable results for children and families

Overall, we need to shift from strategy development in the context of current opportunities (financially, politically, etc.) to one driven by what is needed for student success



# Where are we heading...

For School Readiness, Opportunity Youth and Postsecondary Enrollment

- Plan for each Result Area to have updated Strategy Plans that include performance measures, implementation milestones, roles, and structure recommendations by early Fall

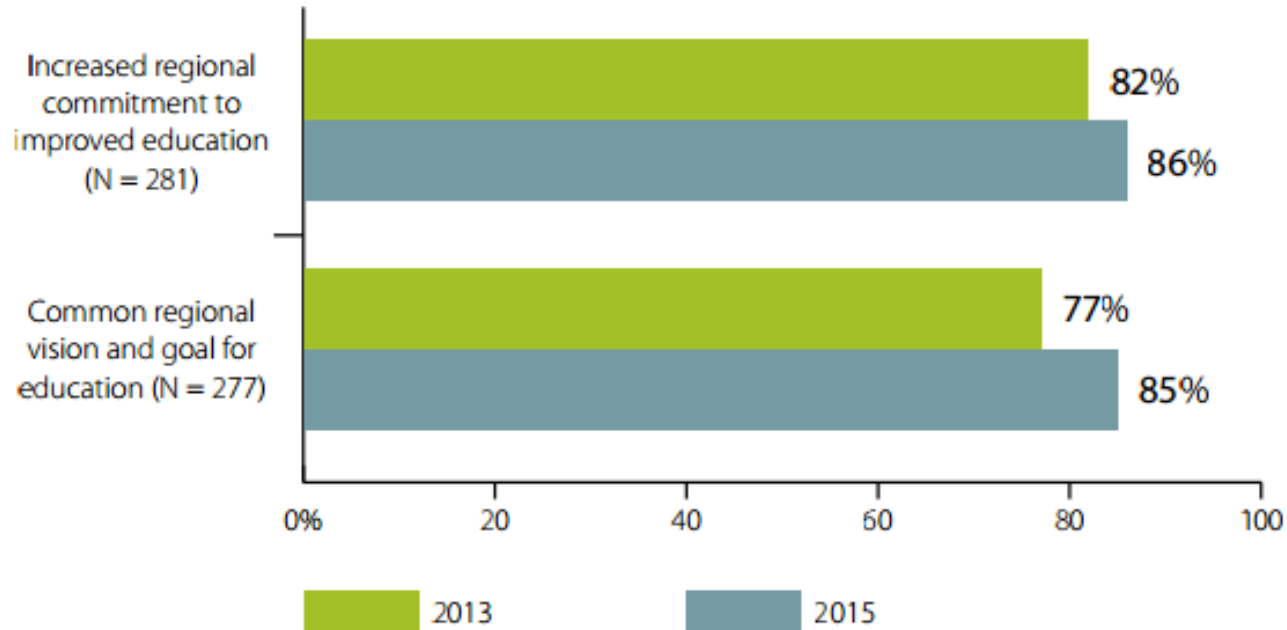
For Result Area work overall:

- Utilize Results Accountability as the methodology for all Result Area work as part of Strategic Refresh
- Determine sequencing of Results Accountability application in other Result Areas
- Decide how best to facilitate/support Results Accountability work across Result Areas (capacity needed, training/development planning, etc.)



# Goal Refinement Considerations

Figure 1. Over time, the Road Map Project cultivated a strong commitment to the goal and a common regional vision



Source: Results come from the 2013 and 2015 Road Map Project formative evaluation survey of stakeholders across the region (2013 N = 417; 2015 N = 311). Percentages represent the average level of agreement, calculated by dividing the mean of the item with the number of categories in the scale (in this case four).



# DRAFT Goal Refinement Options

Current RMP Goal:	The Road Map Project goal is to double the number of students in South King County and South Seattle who are on track to graduate from college or earn a career credential by 2020. We are committed to nothing less than closing the unacceptable opportunity and achievement gaps for low-income students and children of color, and increasing achievement for all students from cradle to college and career.		
Option:	Maintain Current Goal	Same Goal, More Time	Extended Timeline, Increased Goal
Timeline:	2020	2025	2030
What remains unchanged:	<ul style="list-style-type: none"> <li>• A commitment to closing opportunity and achievement gaps for low-income children and children of color</li> <li>• A commitment to improving the entire education continuum, from cradle through college and career               <ul style="list-style-type: none"> <li>• A commitment to the Road Map Region – South Seattle and South King County</li> </ul> </li> </ul>		
Proposed changes across all options:	<ul style="list-style-type: none"> <li>• The addition of system change benchmarks and other student success leading indicators               <ul style="list-style-type: none"> <li>• Better disaggregation of data by race/ethnicity</li> </ul> </li> </ul>		
Proposed Changes for specific option:	<ul style="list-style-type: none"> <li>• Maintain current goal with current timeframe</li> </ul>	<ul style="list-style-type: none"> <li>• Maintain current goal with revised timeframe</li> <li>• Add system-change targets; Stagger Leading Indicator Targets in 2020 and 2025.</li> </ul>	<ul style="list-style-type: none"> <li>• Increase RMP goal to 70% postsecondary attainment (by age 26)</li> <li>• Add system-change targets; Stagger Leading Indicator Targets in 2020, 2025 and 2030.</li> </ul>
Considerations:	<ul style="list-style-type: none"> <li>• The Road Map Project should remain a time-limited regional initiative committed to accelerating progress through the 2020-21 school year.</li> <li>• A lot can be accomplished by committed partners with five more years of hard work.</li> </ul>	<ul style="list-style-type: none"> <li>• Accounts for expected gains in region as a result of RMP momentum and Race to the Top implementation.</li> <li>• Need to define strategies to maintain the sense of urgency with extended timeline</li> </ul>	<ul style="list-style-type: none"> <li>• 70% goal is more aligned to the market labor needs.</li> <li>• Aligns to upcoming Washington Roundtable announcement and potentially to long-term WA State ESSA goal; Opportunity to be the first in State to achieve the goal.</li> <li>• See considerations from 2025 option</li> </ul>



# DRAFT Core Accountability Functions

1. At the regional level, prioritize, align, sequence and track system and student level results work for region
2. Resource planning, development and alignment to support the overall results work
3. Define, implement, support and track specific results area work
4. Define, implement, support and track system change/equity lever work
5. Define, implement, support and track data functions and community specific work
6. Define, implement, support and track ongoing community consultation work

