

The ROAD MAP PROJECT
Supported by CCER

From Cradle to College and Career

Regional Re-Engagement Network Meeting
November 21, 2014

Agenda

9:10 – 9:30	Overview & Icebreaker
9:30 – 10:15	Values, Relationships & Math Instruction <i>Guru Dorje, Shoreline Community College</i>
10:15 – 10:40	Values, Relationships & Instruction – Small Group Discussions
10:40 – 10:55	Break
10:55 – 11:15	Community Resource Feature: King County Library System <i>Jerene Battisti, Teen Services Coordinator</i>
11:15 – 11:30	Announcements & Closing

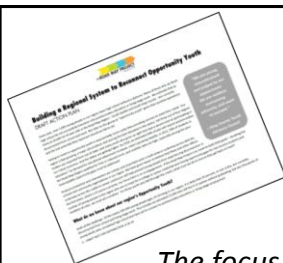


Network Goals:

- Cross-program sharing and networking
- Regional collaboration
- Data-driven learning and improvement
- Tracking regional progress

Feedback from prior meetings:

- More time to go in-depth on topics
- Value is interacting with peers
- Interest in talking about academics/instruction
- Interest in building data capacity



Opportunity Youth Action Plan

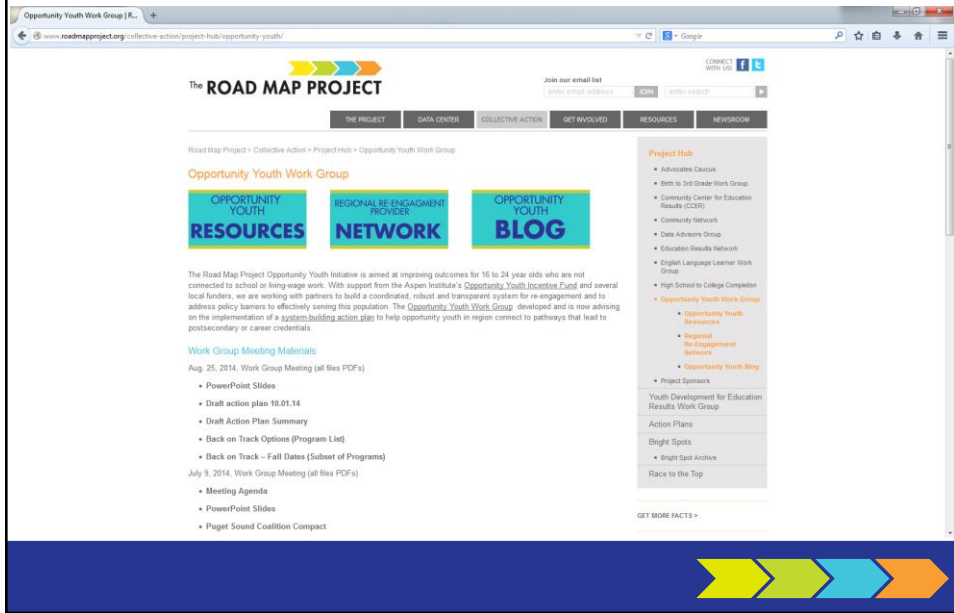
*The focus of the action plan is building a **strong system** of re-engagement pathways*

Organized around four goals:

1. Improve SUPPLY
2. Increase COORDINATION
3. Improve QUALITY
4. Increase AWARENESS of & ACCESS

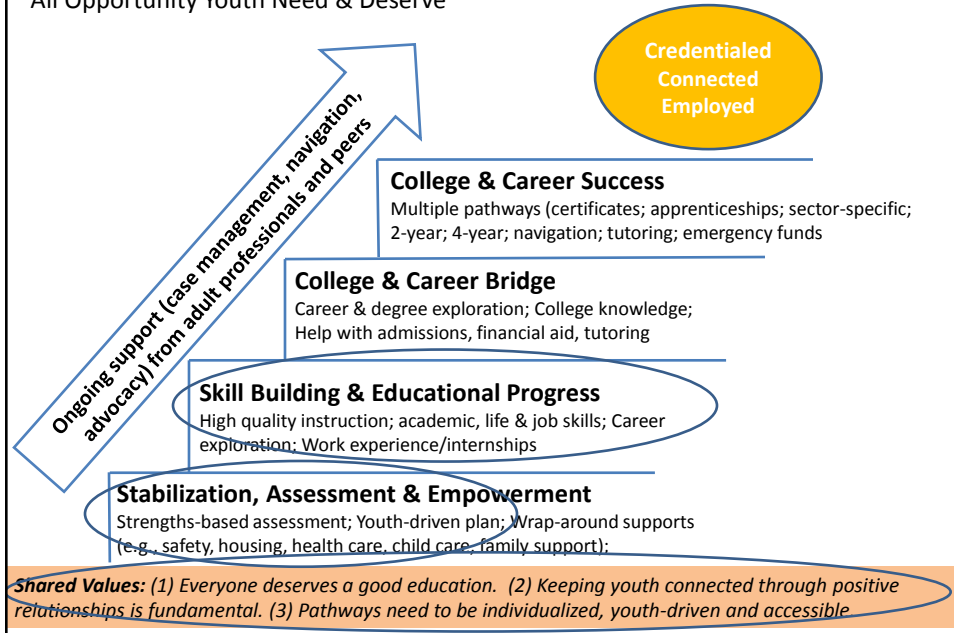


www.roadmapproject.org/oy



Shared Framework for Comprehensive Pathways

All Opportunity Youth Need & Deserve



Icebreaker – pair up and discuss

Think of a **great learning environment** that you have experienced – a formal or informal education setting where you learned a lot.

What are some characteristics – either of the setting or the instruction – that made it a positive learning environment for you?



Values, Relationships & Instruction Small group discussions

- What about LCN/Shoreline's approach resonates with you?
- Are there any strategies or practices that could be incorporated into your approach?
- Is there something you didn't hear in LCN's presentation that is an important part of your approach to instruction?



The screenshot shows the KCLS Teen website interface. At the top, a red banner reads "All KCLS Libraries will be closed on Thanksgiving, Thursday, Nov. 27." Below this is a navigation bar with the KCLS logo and links for "EBOOKS & Downloads", "BOOKS & More", "USING THE Library", "CLASSES & Programs", "KIDS & Teens", and "LEARNING & Research". A "MY ACCOUNT" button is also visible. The main content area is titled "TEEN" and features several promotional tiles: "BOOKLISTS" with book covers, "Fresh Start! One-Time Fine Waiver for Students in Kindergarten through 12th Grade!", "Events" with a photo of a student, "eBooks" with a tablet, "LIFE AFTER LAHS HIGH SCHOOL" with a laptop, and "HelpNow" with a keyboard. A Windows taskbar is visible at the bottom of the browser window.

www.kcls.org/teen

- **Tutor.com:** Free, live on-line tutoring daily from 2pm – midnight. Includes GED and compass tutoring; disponible en Espanol.
- **Brainfuse:** Free, live on-line tutors daily from 1 – 10pm to help students prepare for tests (MSP, HSPE, SAT).
- **Microsoft IT Academy:** Free access to courses that lead to industry-recognized certificates. Register for a free account at signup.live.com. Visit IT Academy at: bit.ly/KCLS-ITA.

Remaining 2014 Meeting Dates

- December 19, 9:00 – 11:30 (PSESD)
 - Tentative focus:
 - Case management
 - Options for age 21+
- Dates/times/locations for 2015 coming soon!



Announcements? Events?

Road Map Project Cradle-to-College Coalition

www.roadmapproject.org/c2ccoalition.org

Others?

