



The ROAD MAP PROJECT

Supported by CCER

From Cradle to College and Career

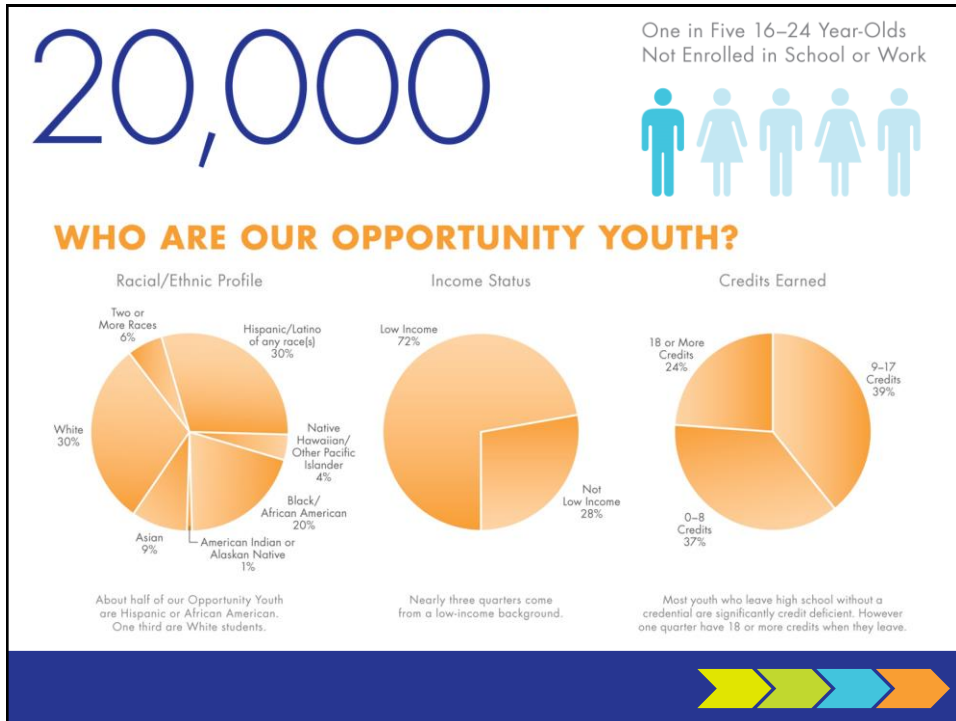
January 9, 2014

Road Map Project Opportunity Youth Action Plan

*The focus: Build a **strong system** of re-engagement pathways*





Current “system” landscape

Re-engagement options exist and are expanding, however:

- Increased coordination is needed
 - Too few programs integrate education & employment
 - Connections to postsecondary pathways are inconsistent
 - Evidence of effectiveness is limited and inconsistent
 - Demand outpaces supply
-

Goals & Strategies

IMPROVE SUPPLY

- Support the development and expansion of pathways
- Address systemic barriers to effective re-engagement

INCREASE COORDINATION

- Establish a shared regional vision for re-engagement
- Identify and develop shared structures

IMRPOVE QUALITY

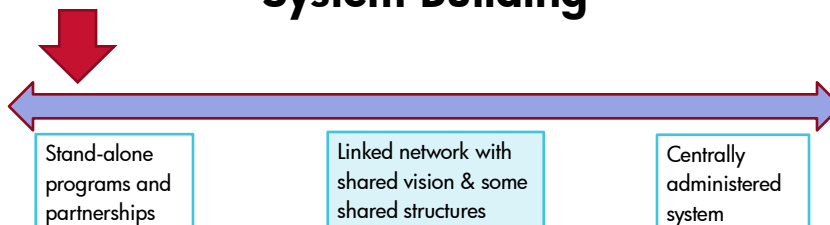
- Develop shared continuous quality improvement tools & processes
- Monitor system reach and outcomes

INCREASE AWARENESS & ACCESS

- Develop effective ways to reach youth who drop out of HS and college
- Implement regional youth-led outreach strategies



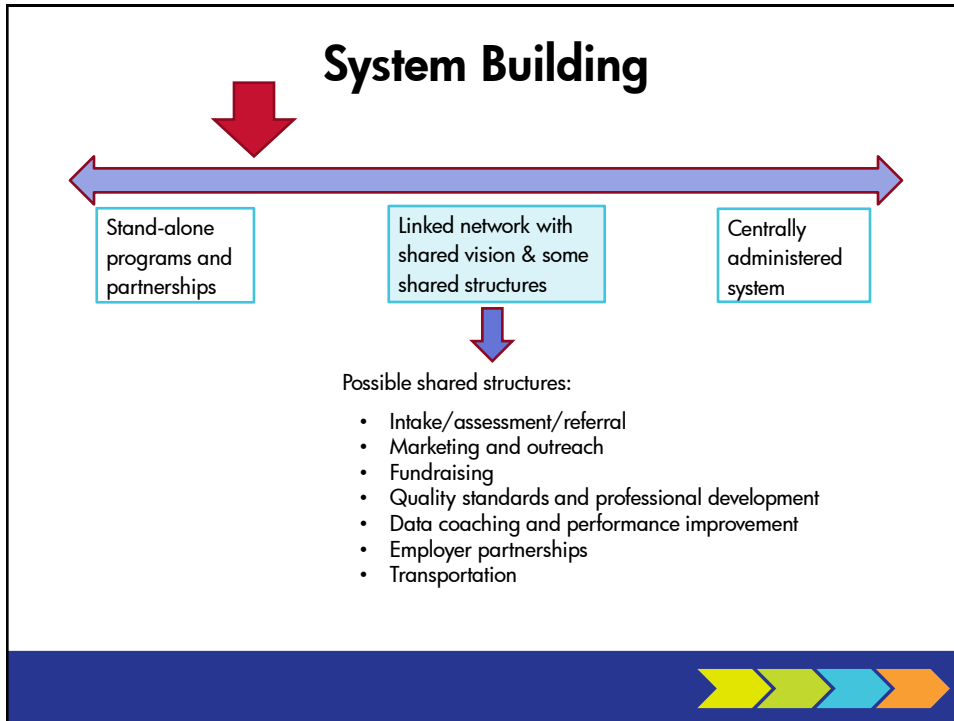
System Building




Possible shared structures:

- Intake/assessment/referral
- Marketing and outreach
- Fundraising
- Quality standards and professional development
- Data coaching and performance improvement
- Employer partnerships
- Transportation







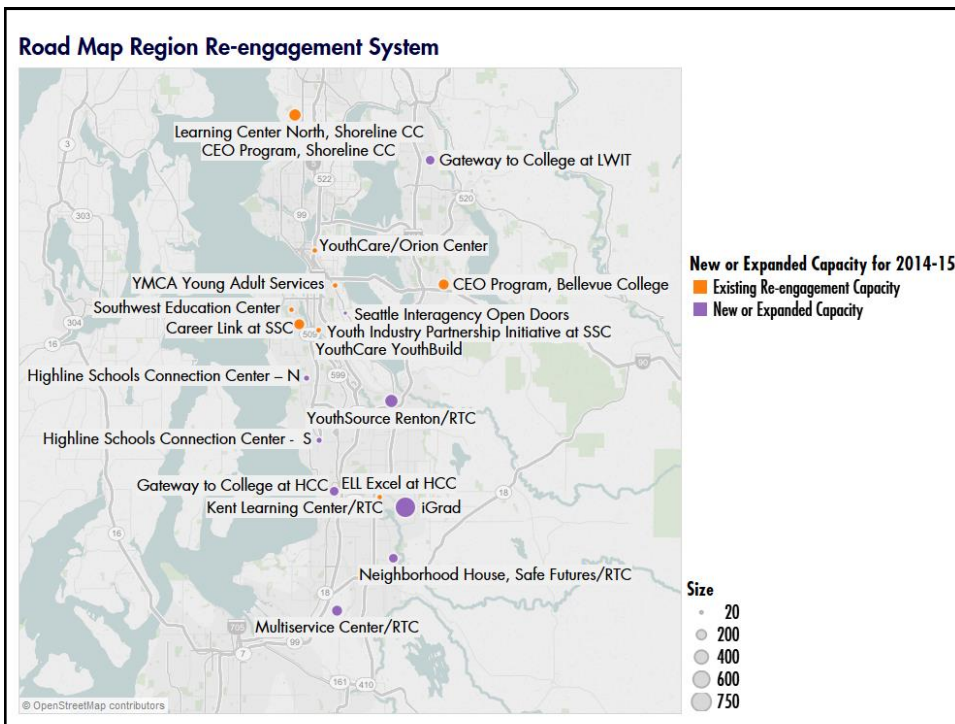
Statewide Status

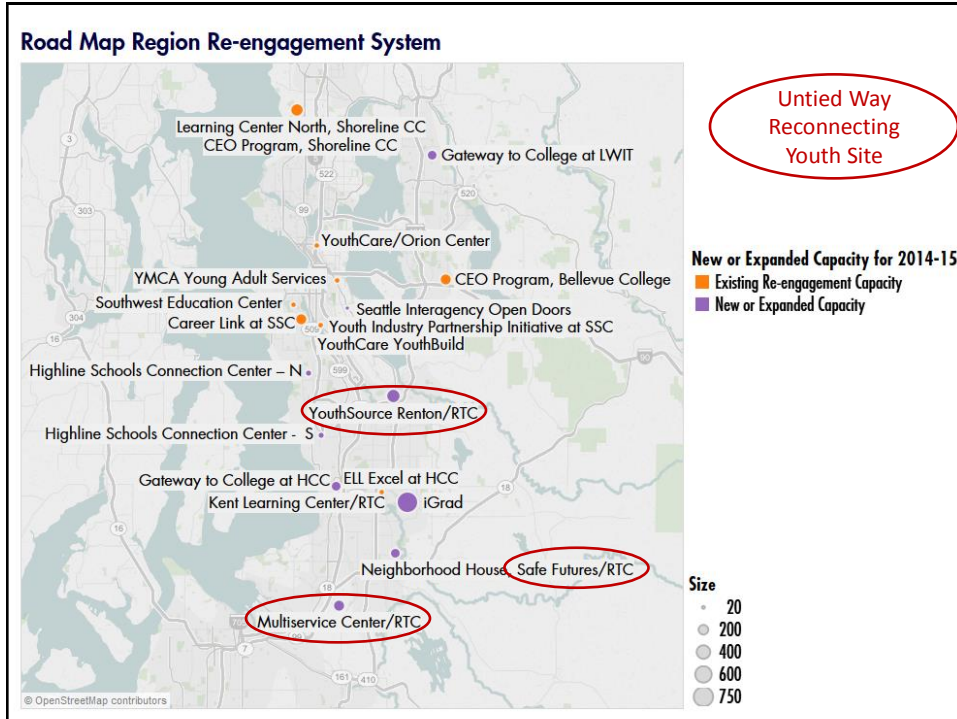
66 districts approved (including 3 consortia)

Year	Students Enrolled	Credentials earned (diplomas, GEDs, AAs)
2014-15	2,536	
2013-14	2,417	376
2012-13	797	198

Open Doors Programming - Road Map Region				
Program	Lead Partners	Academic Options	Start	Capacity
iGrad	Kent Schools, Green River Community College	*Diploma, GEDplus, certificates, AA	Fall 2012	750
YouthSource Renton/ Reconnecting Youth	Renton Technical College (RTC), Renton & Tukwila Schools, King County, United Way	*GEDplus	Fall 2013	150
Reconnecting Youth	RTC, King County, Renton Schools, SafeFutures, United Way	*GEDplus	Fall 2014	150 (50/month)
Reconnecting Youth	Multi-Service Center, RTC, King County, Renton Schools, United Way	*GEDplus	Early 2015	150 (50/month)
Seattle Interagency Open Doors	Seattle Schools, Seattle Colleges, YouthCare	*GEDplus	Fall 2014	20 in fall pilot
Highline Connection Centers	Highline Schools	Interim instruction towards multiple pathways	Fall 2014	TBD
Southwest Education Center	Highline Schools, Southwest Youth & Family Services	GEDplus	Fall 2014	50
Gateway to College	Highline College, Highline Schools & Federal Way Schools	Diploma, AA	Fall 2014	120
ELL Excel	Highline College, Highline Schools,	Diploma, AA	Fall 2014	20 in fall pilot
Acceleration Academy Federal Way	Federal Way Public Schools, Atlantic Education Partners	Diploma	Early 2015	

**Seattle Education Access (SEA) currently provides on-site postsecondary navigation support*





Legislative/Regulatory Barriers	
Funding and Sustainability	<ul style="list-style-type: none"> Lack of start-up funding. 10-month funding cycle leaves year-round programs with gap in summer. Barrier funding would help address consistent challenges (e.g., transportation, food, work readiness).
Institutional Incentives	<ul style="list-style-type: none"> Incentives needed to increase community college participation. For example, Open Doors students do not count toward college enrollment targets and are not included in student achievement initiative.
Data, Reporting & Accountability	<ul style="list-style-type: none"> Data collection, sharing, use and reporting across K-12, postsecondary and other partners are challenging.
Program Model	<ul style="list-style-type: none"> High school diploma considered an end point (unlike GED), triggering an end to funding and reducing postsecondary attainment potential. Intentional utilization of the CTE system should be facilitated

Mindset going forward...

From:

To:

Open Doors as a program	Open Doors as a funding stream
High School completion as the goal	College/career pathway completion as the goal
Traditional instruction	Competency-based and contextualized instruction
A K-12 led initiative to retrieve dropouts	One of several ways K-12 and higher ed are working together
Many distinct programs scattered across our region	A diversified, coordinated system of pathways

Reflections from the state perspective:

Gil Mendoza, Office of the Superintendent of Public Instruction
Jon Kerr, State Board for Community & Technical Colleges



Coalition Discussion

- What are some of the promising elements of the Open Doors effort your district/college is involved in?
- What have been some of the challenges – anticipated or unanticipated?

How can the Coalition help shape the next phase of Open Doors work in the region?

