

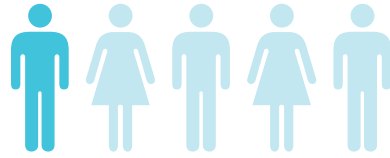
ROAD MAP REGION

OPPORTUNITY YOUTH PROFILE

HOW MANY OPPORTUNITY YOUTH?

20,000

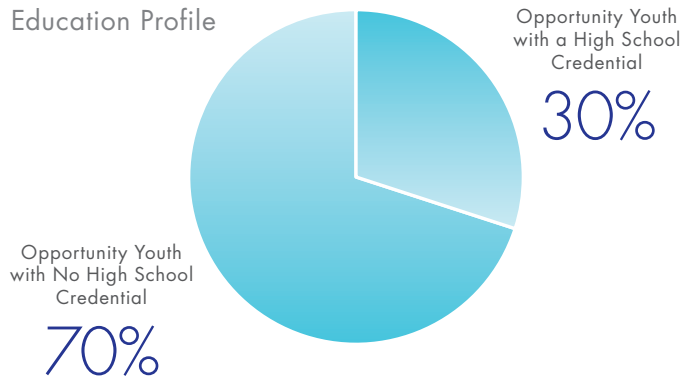
One in Five 16–24 Year-Olds Not Enrolled in School or Work



NOTE: Our opportunity youth definition focuses on ages 16–24. It is important to note that some youth leave school prior to age 16, and they are not reflected in these estimates.

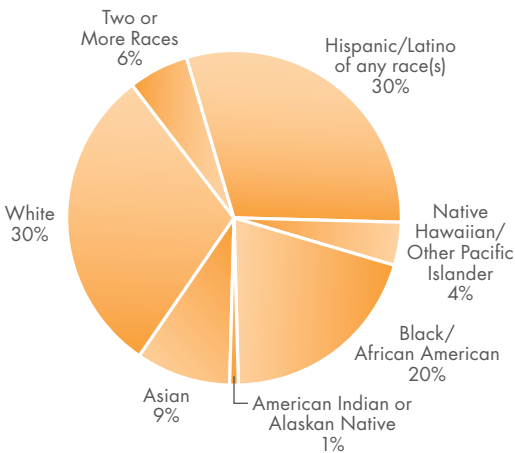
We believe that about one-fifth or 20% of all youth 16-24 in the Road Map Region are not enrolled in work or school. We estimate that over two-thirds of opportunity youth left school without a high school credential. Just under one-third completed a high school credential but have not connected to postsecondary education or living-wage work.

Education Profile



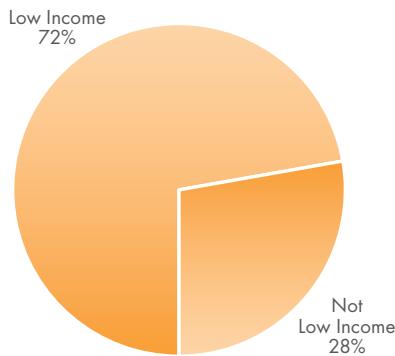
WHO ARE OUR OPPORTUNITY YOUTH?

Racial/Ethnic Profile



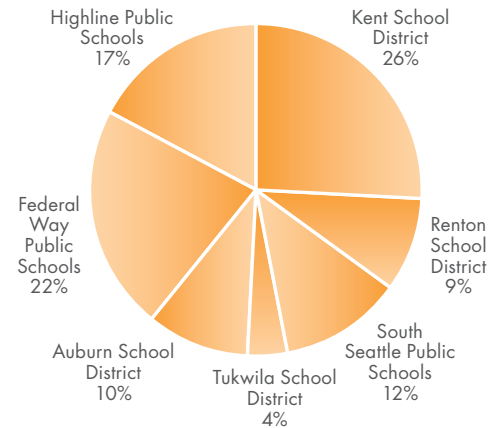
About half of our Opportunity Youth are Hispanic or African American. One third are White students.

Income Status



Nearly three quarters come from a low-income background.

Last District Attended



The majority of our region's Opportunity Youth attended the Kent, Federal Way and Highline Public Schools.

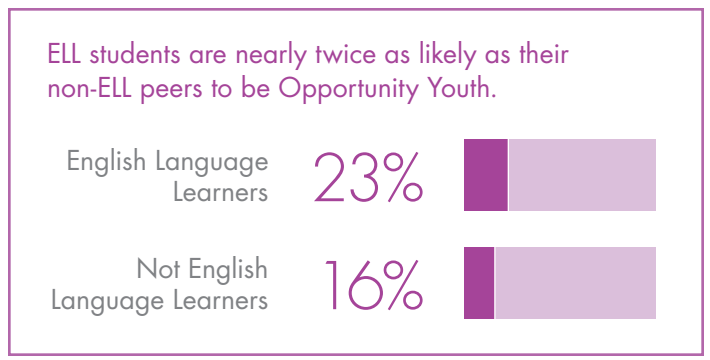
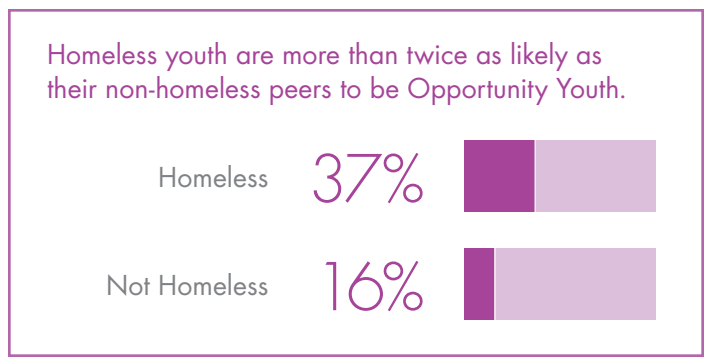
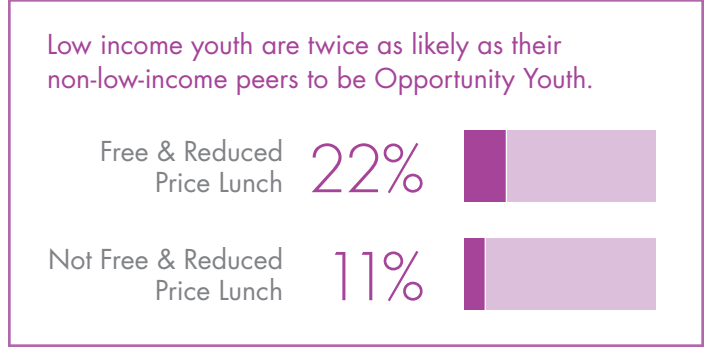
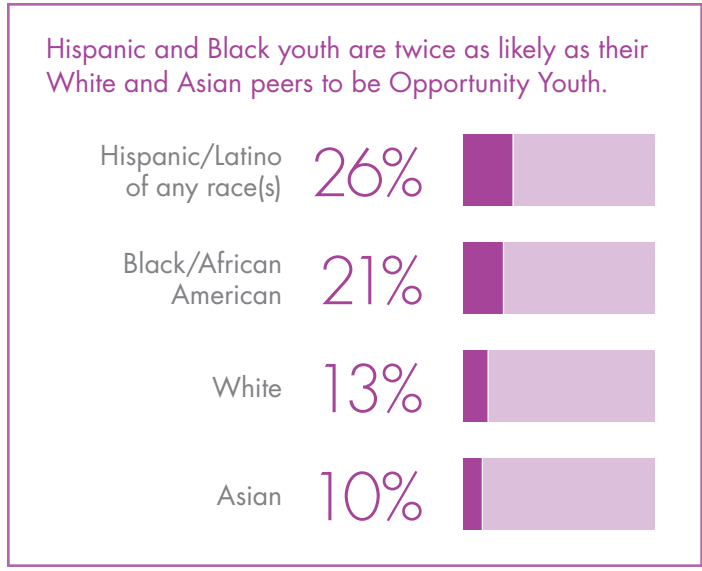


More information about the Road Map Project Opportunity Youth Initiative is available at www.roadmapproject.org/oy

Data sources: Opportunity youth prevalence was estimated using OSPI's student level database (2012-13 data), as well as Census data on 16-24 year-olds in the Road Map Region, Bureau of Labor Statistics estimates of unemployment rates by age and educational attainment level, and other national estimates of opportunity youth prevalence. Demographic descriptions of opportunity youth were based on OSPI's student level database, using 2012-13 records.

WHO IS LIKELY TO BECOME AN OPPORTUNITY YOUTH?

Some youth are more likely to become Opportunity Youth than others. These charts show the proportion of youth within a particular sub-group that are opportunity youth.



FACTORS BEHIND DISENGAGEMENT

A variety of factors influence why young people become opportunity youth. Focus group data collected via the King County Youth Advisory Council and the Washington Student Oral Histories Project suggest key factors include:

- Family challenges and responsibilities that result in competing priorities
- School factors (academic challenges, lack of support, negative labels, lack of trust)
- Lack of awareness of and access to alternative options



More information about the Road Map Project Opportunity Youth Initiative is available at www.roadmapproject.org/oy

Data sources: Opportunity youth prevalence was estimated using OSPI's student level database (2012-13 data), as well as Census data on 16-24 year-olds in the Road Map Region, Bureau of Labor Statistics estimates of unemployment rates by age and educational attainment level, and other national estimates of opportunity youth prevalence. Demographic descriptions of opportunity youth were based on OSPI's student level database, using 2012-13 records.